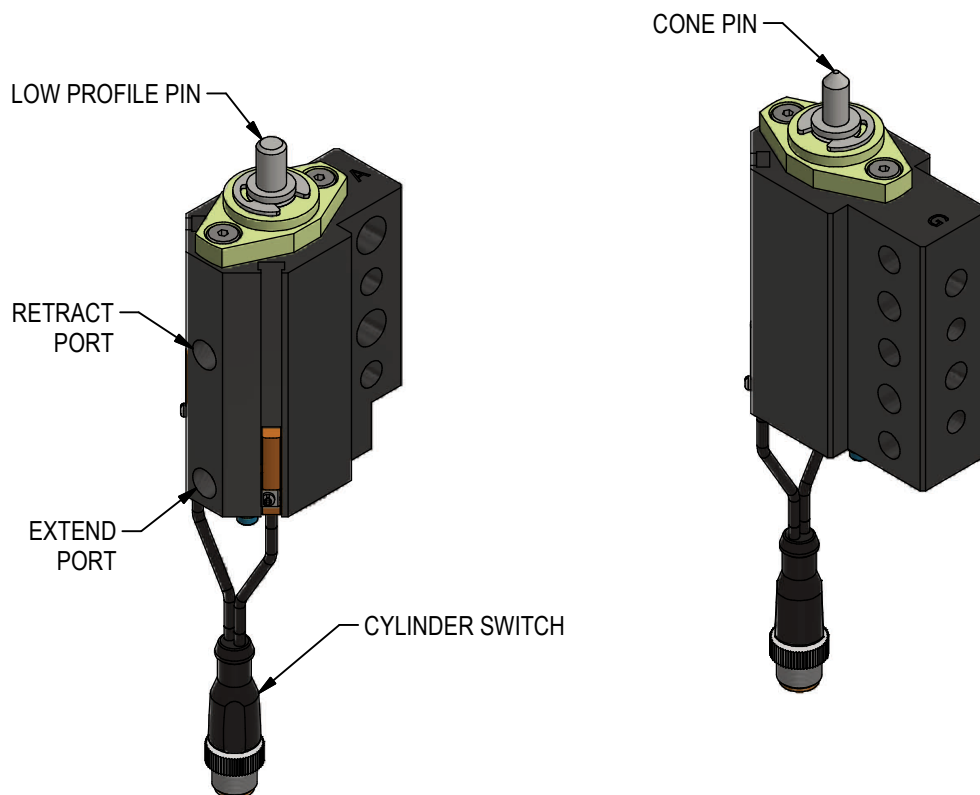


NMP MAINTENANCE MANUAL



FLOATING PIN SEQUENCE OF OPERATION:

1. EXTEND CYLINDER TO LOCK PIN IN PLACE.
2. LOAD PRODUCT TO PIN AND PERFORM TOOL OPERATION.
3. RETRACT CYLINDER, ALLOWING PIN TO FLOAT.
4. UNLOAD PRODUCT FROM PIN.
5. REPEAT SEQUENCE.

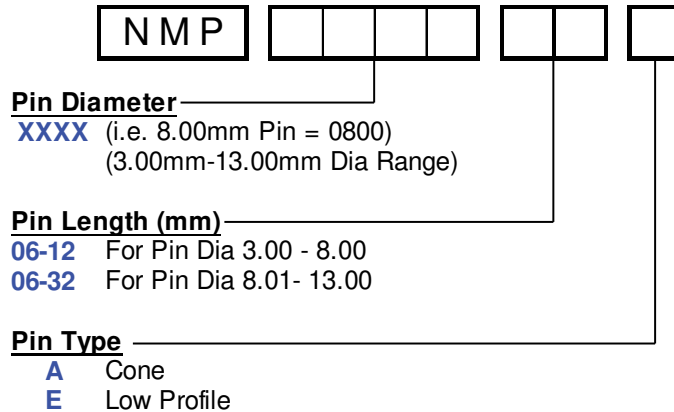
RELEASED 3/30/21

REPLACEMENT PARTS

QTY	STOCK*	DESCRIPTION	PART NUMBER
1	1	PIN	SEE INFO BELOW
	1	REBUILD KIT	NMP-RBK
1	1	CYLINDER SWITCH	SWITCH L3

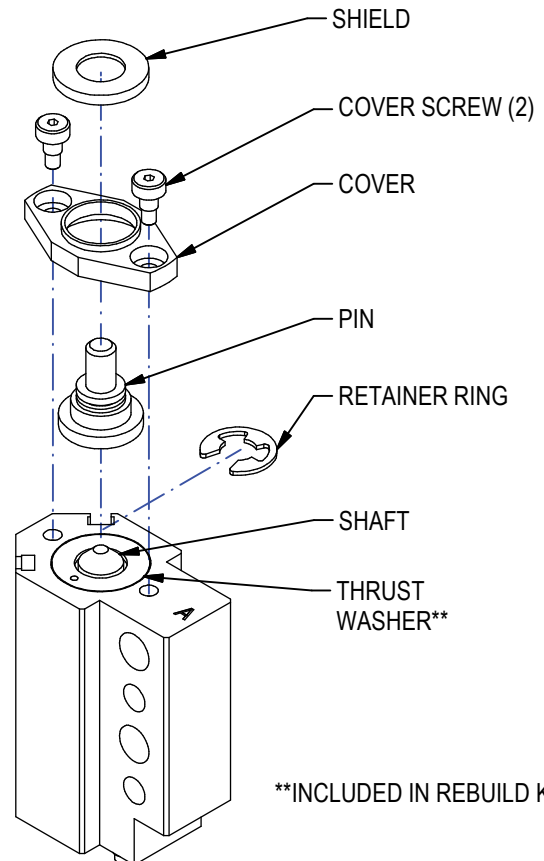
*RECOMMENDED SPARE PARTS TO KEEP IN STOCK

REPLACEMENT PIN ORDERING INFORMATION



TO REPLACE PIN:

1. DISCONNECT AIR LINES TO UNIT.
2. REMOVE RETAINER RING.
3. REMOVE SHIELD (LOOSE).
4. REMOVE COVER SCREWS & COVER.
5. REMOVE PIN.
6. CLEAN SURFACES.
7. APPLY A THIN COAT OF MAGNALUBE-G OR EQUIVALENT TO SHAFT AND THRUST WASHER.
8. INSTALL NEW PIN.
9. SECURE PIN WITH COVER & COVER SCREWS. APPLY REMOVEABLE THREAD ADHESIVE TO SCREWS. TORQUE TO 3Nm (26.5 in-lb).
10. INSTALL SHIELD.
11. INSTALL RETAINER RING.



**INCLUDED IN REBUILD KIT

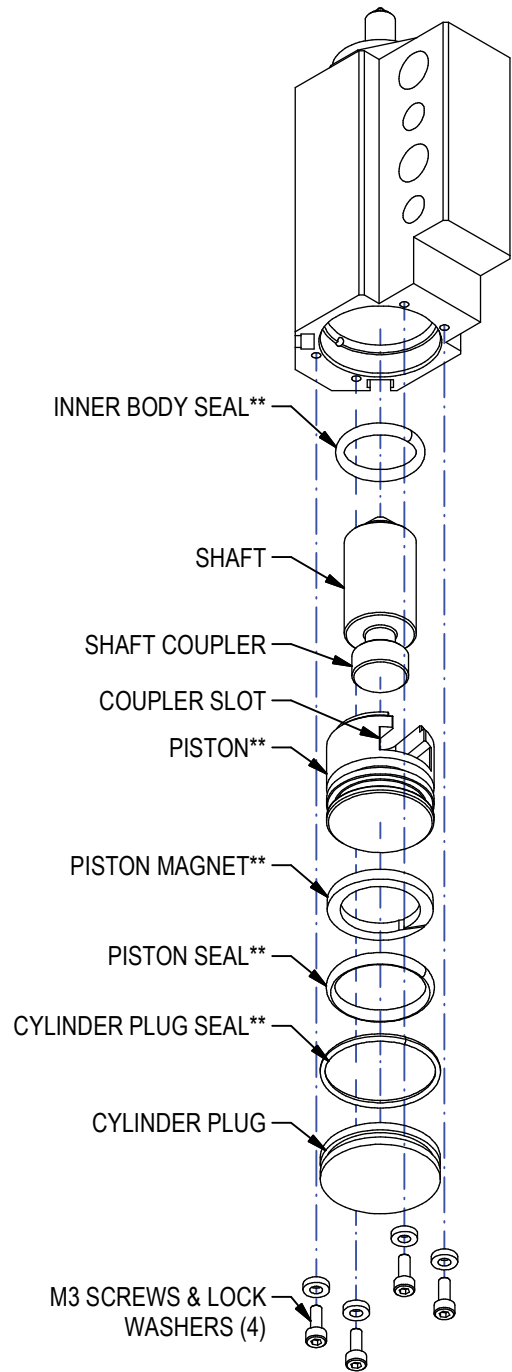
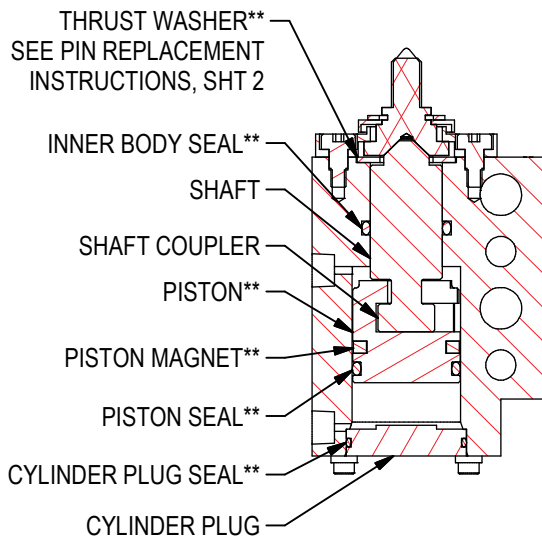
(DO NOT SCALE DRAWING)



REBUILD KIT

REBUILD KIT: ORDER PART NUMBER NMP-RBK
INCLUDES: PISTON, MAGNET, SEALS (3) AND THRUST WASHER

1. DISCONNECT AIR LINES TO UNIT.
2. REMOVE M3 SCREWS & LOCK WASHERS SECURING PLUG TO UNIT BODY.
3. REMOVE PLUG.
4. BACK SHAFT AND PISTON OUT OF UNIT AND REMOVE.
5. SLIDE SHAFT OUT FROM SLOT IN PISTON.
6. REMOVE INNER BODY SEAL.
7. INSTALL NEW INNER BODY SEAL.
8. INSTALL MAGNET AND PISTON SEAL TO PISTON.
9. INSTALL NEW CYLINDER PLUG SEAL TO CYLINDER PLUG.
10. APPLY MAGNALUBE-G OR EQUIVALENT TO PISTON, SHAFT, ALL SEALS AND BODY BORE.
11. INSTALL SHAFT TO SLOT IN PISTON.
12. REASSEMBLE UNIT. APPLY REMOVEABLE THREAD ADHESIVE TO SCREWS. TORQUE TO 1.5Nm (13.3 in-lb)



**INCLUDED IN REBUILD KIT

(DO NOT SCALE DRAWING)

WELKER
ENGINEERED PRODUCTS
800-229-0890 www.welkerproducts.com