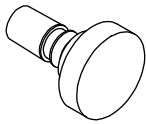


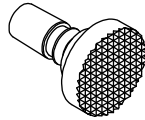
NOSE OPTIONS

ALL SWIVEL HEADS ARE RWMA CLASS 2 COPPER

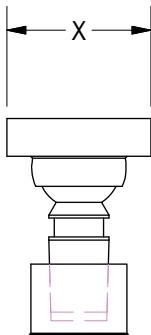
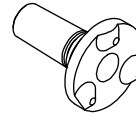
FLAT SWIVEL HEAD



SERRATED SWIVEL HEAD



PROJECTION SWIVEL HEAD



GBP & GBS NOSE OPTIONS: #2 MT TAPER			
OPTION	SWIVEL HEAD	DIM "X"	RE-ORDER PART NUMBER
B	FLAT SWIVEL HEAD	38.1mm (1.5")	SN-1412
C	SERRATED	38.1mm (1.5")	GBS25E1000
D	PROJECTION	38.1mm (1.5")	GBPH25E1000
E	SMALL FLAT	22.2mm (0.88")	SN-157

M NOSE OPTIONS: #2 MT TAPER			
OPTION	SWIVEL HEAD	DIM "X"	RE-ORDER PART NUMBER
B	X-LARGE FLAT	38.1mm (1.5")	SN-1412
C	LARGE FLAT	30.5mm (1.25")	SN-1410
D	MEDIUM FLAT	25.4mm (1")	SN-148
E	SMALL FLAT	22.2mm (0.88")	SN-147

M NOSE SWIVEL HEADS ARE NOT INTERCHANGEABLE WITH GBP & GBS

DRAFT

SWITCH INFORMATION

Switch	Part Number	Manufacturer	Description
L3	SWITCH L3* L3 switch is weld field immune, comparable to World Switches. Dual sensor switch, 1 per cylinder	Welker	4-Wire, 4-Pin, DC (PNP) M12 X 1 Quick Disconnect

*Note that some mid and low frequency DC resistance applications (i.e. aluminum resistance welding applications) may cause a fault. In these applications, it is recommended that the sensor be ignored/bypassed during the welding cycle.

(DO NOT SCALE DRAWING)

