

ORDERING INFORMATION

S 0 1 7 8 1 - 0 5 0 B 0 2 S P 1 P X 1 Z Z Z Z

Coupler
 A Flap (shortens nominal stroke by 2mm)
 B Rigid

Actuator
 01 NPT Ports
 02 G Ports

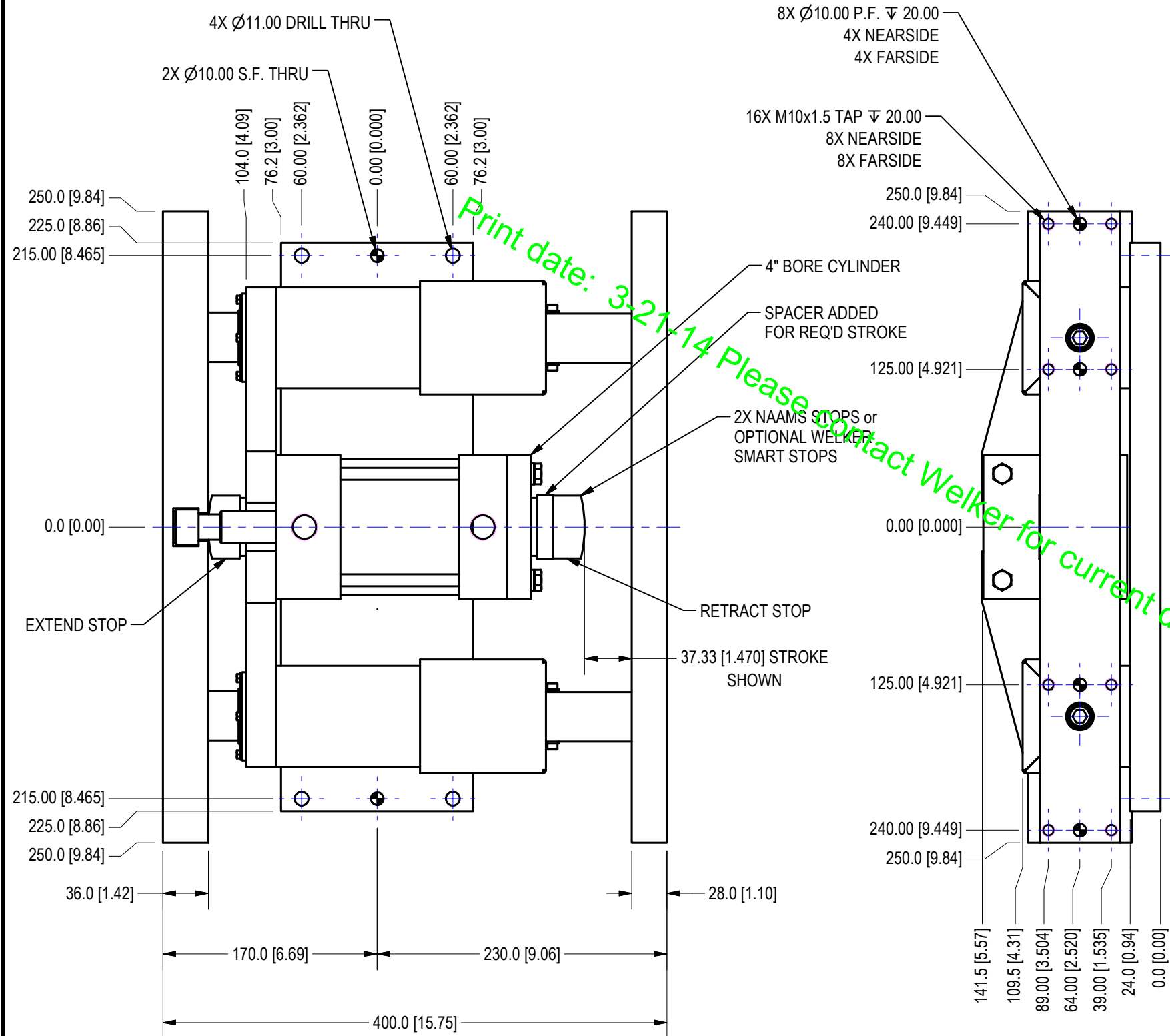
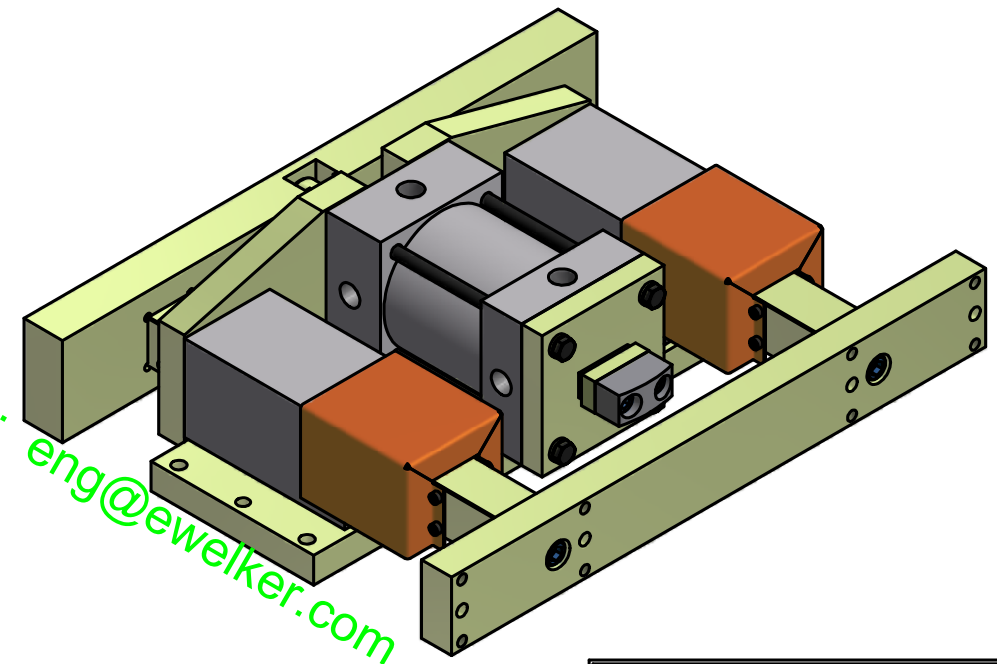
Switch
 00 No Switch
 P1 Welker Smart Stops

Precision
 X Normal
 P High Precision

Shroud
 0 No Shroud
 1 Shroud

Spacer
 ZZZ Extend = 0.00, Retract = 12.67

INCLUDE "ZZZZ = EXTEND 0.00, RETRACT = 12.67"
 IN THE ORDER INFORMATION



**37.33 USABLE STROKE
 SLIDE SHOWN IN EXTENDED POSITION**

APPROX WT: #147 LBS

APPROVAL
 APPROVED:
 AS NOTED:
 BY: _____
 DATE: _____

UNITS ARE MILLIMETERS
 (i.e.X.XXmm [x.xxx"])
 DO NOT SCALE DRAWING

WELKER BEARING COMPANY					
TOOL NAME: GUIDED SLIDE					
TEMPLATE					
DATE	STATUS	DRAWN BY	DATE	CHK'D BY	ENG APPROVAL
2/14/2014	Released	DJH	2/14/2014	GSK	
SCALE: 1/4		FILE NAME: S01781L01			